

CURBO

Concrete Solutions For Better Parking

NATIONWIDE!

- Parking Curbs
- Truck Curbs
- Manufacturing
 - Delivery
 - Installation

Get your quote today!

443-MR-CURBO || CurboCurbs.com

CURBO

Concrete Solutions For Better Parking

Started in 1985, CURBO Parking Curbs is a family owned business located near Lancaster PA

A unique combination of traditional and modern lifestyles is common in the area surrounding the company, where horse and buggy rigs mingle with trucks and cars on the road.

This is a fitting location for the work of CURBO Concrete Solutions, where, in a 30,000 square foot shop, thousands of parking curbs are produced every month by a talented team, using modern tools and up-to-date, highly-durable finishing techniques.

CURBO Parking Curbs serves the entire USA with top quality concrete parking curbs built to last for the ages.

Call/text 443-672-8726 | Lancaster, PA | CurboCurbs.com

- **Parking Curbs**
- **Truck Curbs**
- **Manufacturing**
 - **Delivery**
 - **Installation**



Get your quote today!

443-MR-CURBO || CurboCurbs.com

Freedom Tower, NYC & Jersey City



Concrete Advantages:

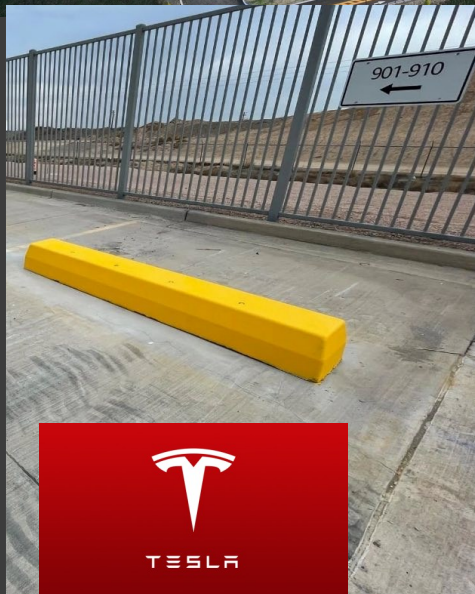
- ♦ Concrete Parking Curb Pricing is usually about 1/2 of a similar product in rubber or plastic.
- ♦ No harmful, cancer causing carcinogens emitted in the manufacturing process.
- ♦ Manufactured with the most plentiful resources & raw materials on planet Earth.
- ♦ Our 5500 psi wet cast concrete mix with air entrainers & superplasticizers has been proven to outlast rubber & plastic products in longevity & weathering resistance.

Design tips

- ◆ 3 feet is the ideal edge to edge measurement from the edge of the parking lot
- ◆ 6-7 feet is usually required at walkways and double parallel parking
- ◆ Truck curb to edge of parking lot spacing is 6 feet if there are no obstructions in the back
- ◆ 18 foot is usually required at walkways and double parallel parking
- ◆ 12 foot is usually required from light pole bases and other similar obstructions
- ◆ Check with your local codes as these vary widely from state to state



Call/text 443-672-8726 | Lancaster, PA | CurboCurbs.com



**Curbo is USA's warehouse
parking expert!**

Call/text 443-672-8726 | Lancaster, PA | CurboCurbs.com

Warehouse parking

National service = Consistent results

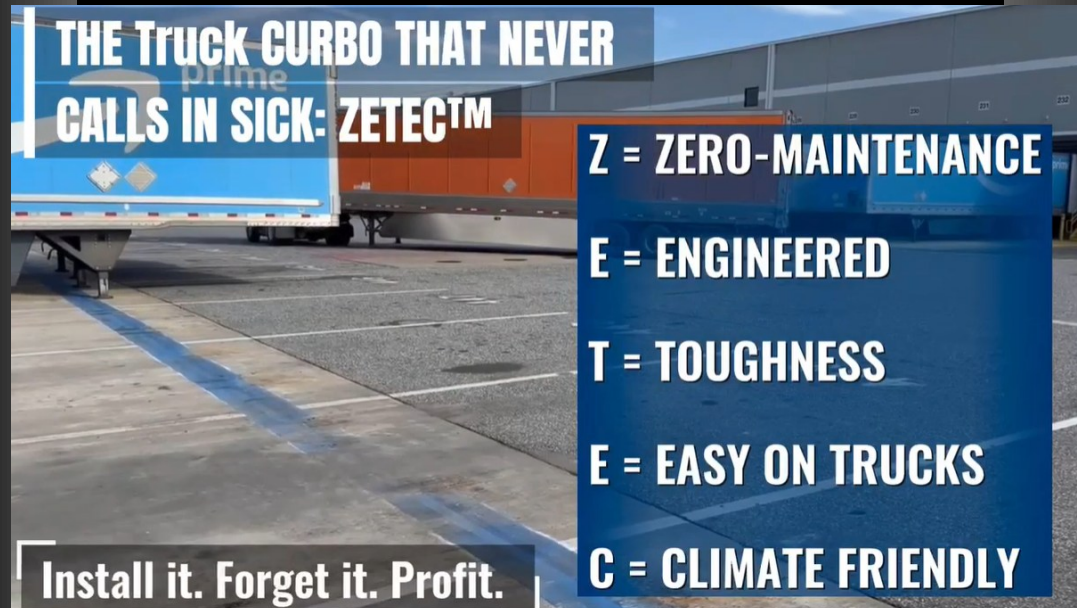
- ◆ When national warehouses like Amazon, Fedex, Toyota, Tesla and many others require consistent installations, on time and under budget the turn to Curbo again and again
- ◆ Whether you have new construction or maintenance upgrades you can also upgrade to the Curbo Curbs experience: One contract, whether it's 5 locations or 1,000. We truly excel on multi site projects and maintenance upgrades.
- ◆ 1 contract = easy implementation & minimized disruption



Lowes Warehouse, Suffolk VA

20 semi load of our Aztec model,
manufactured and installed by Curbo

Introducing: **ZTEC Truck Curbo**



**THE TRUCK CURBO THAT NEVER
CALLS IN SICK: ZTEC™**

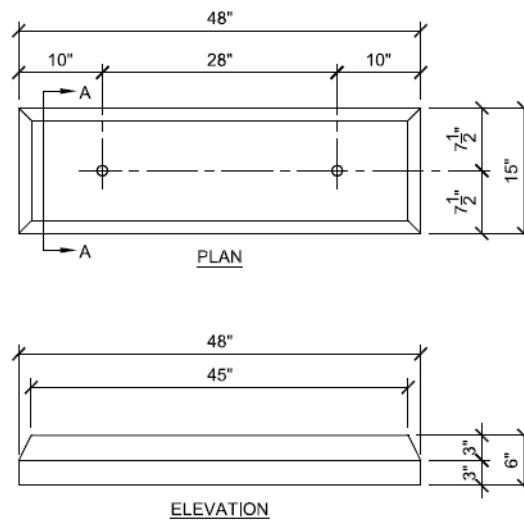
Z = ZERO-MAINTENANCE
E = ENGINEERED
T = TOUGHNESS
E = EASY ON TRUCKS
C = CLIMATE FRIENDLY

Install it. Forget it. Profit.

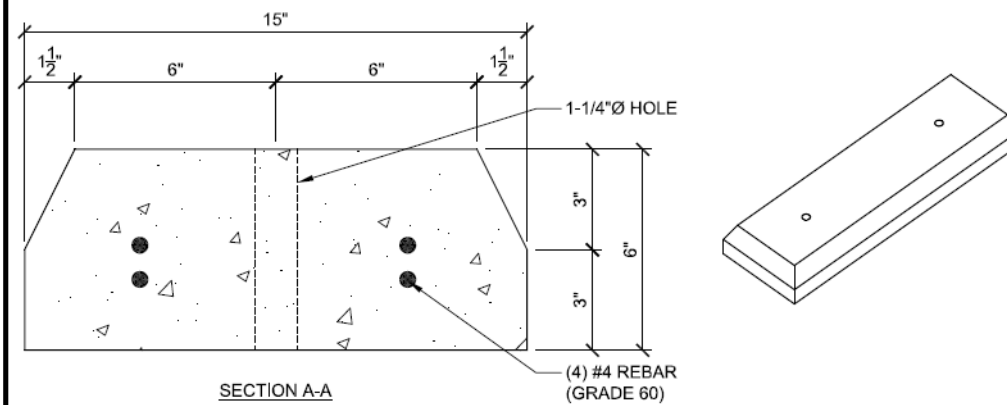
**Designed and manufactured
exclusively by Curbo to minimize
trailer damage and maximize
yard efficiency, especially for
jockey truck applications!**

(For critical infrastructure protection use our Aztec model)

Call/text 443-672-8726 | Lancaster, PA | CurboCurbs.com



The warehouse Curbo!



NOTES: 5500 PSI Air Entrained Concrete 340 lbs

ZTEC Curbo

- 1 per stall
- Driver side only
- Flat parking spots only
- Recommend painting yellow



How are parking curbs beneficial in parking lots?

- ♦ Safer parking
- ♦ Less property damage
- ♦ **Better space utilization**
- ♦ Visual aid for excellent parking systemization
- ♦ **Stormwater system friendly for water sheet flow design**
- ♦ Concrete Parking Curbs are a requirement on many projects due to their environmentally friendly design
- ♦ Superior stopping ability and reduced liability costs



Call/text 443-672-8726 | Lancaster, PA | CurboCurbs.com

Our sMART Certified packaging program uses 100% reused and recycled material for packaging.

This strategy offers huge benefits for the environment.

Thousands of trees saved!

This has diverted millions of pounds waste product out of landfills

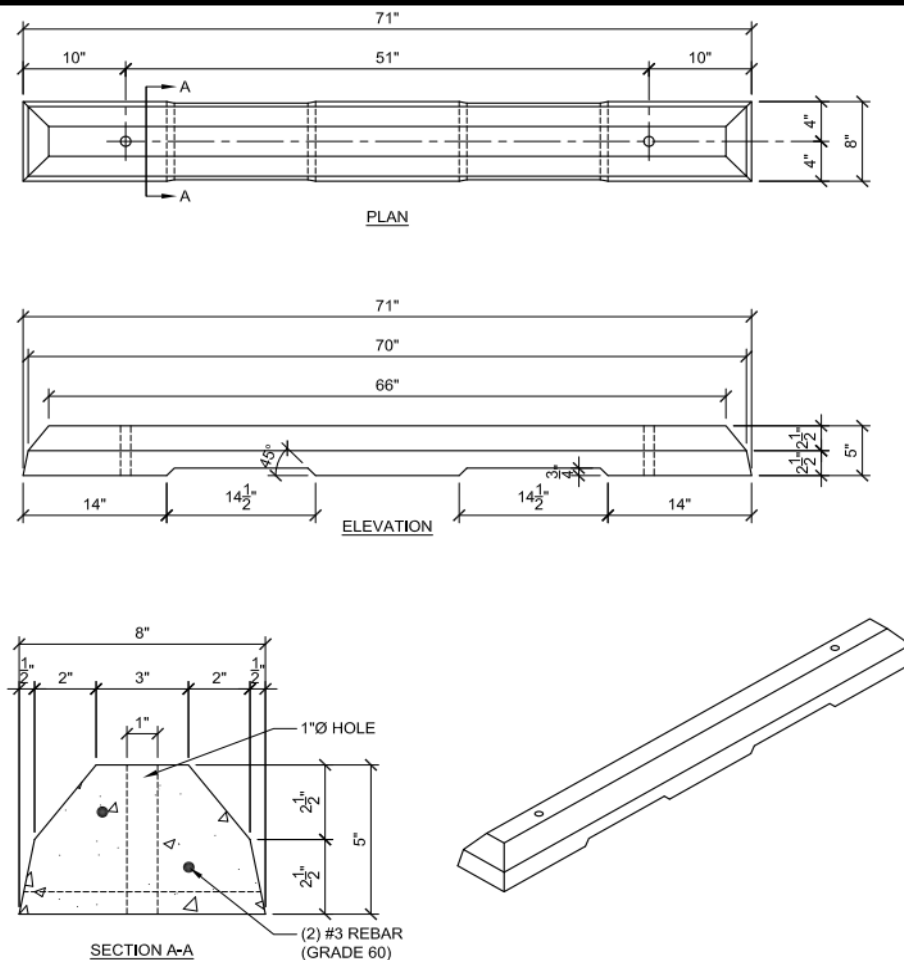


Curbo's Premium Precast Concrete parking lot items are the most sustainable & environmentally friendly solution to your standard & custom parking lot items.

Call/text 443-672-8726 | Lancaster, PA | CurboCurbs.com

#CCSC1

Our most popular
car parking CURBO!



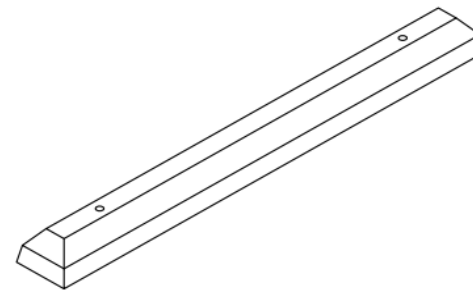
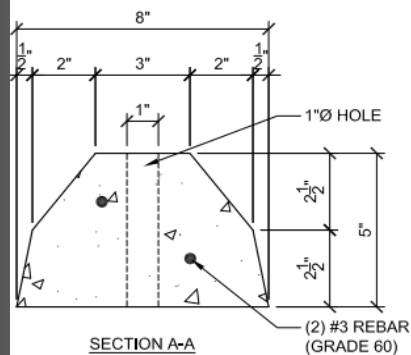
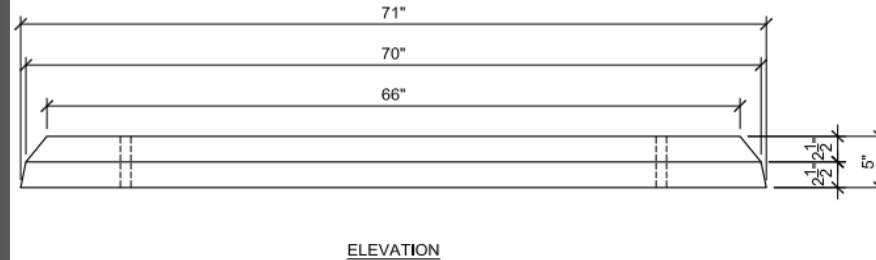
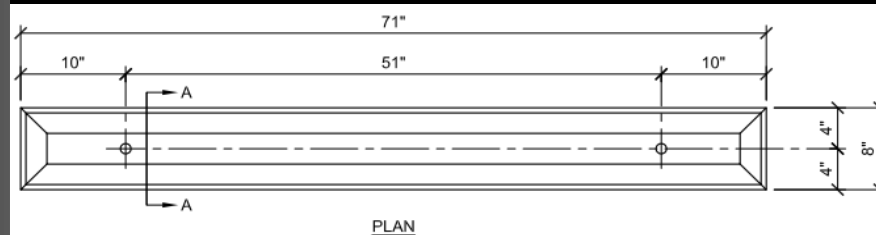
Material: 5500 PSI Air Entrained Concrete 185 lbs

Car Curb Standard (Slotted)

Call/text 443-672-8726 | Lancaster, PA | CurboCurbs.com

#CCS

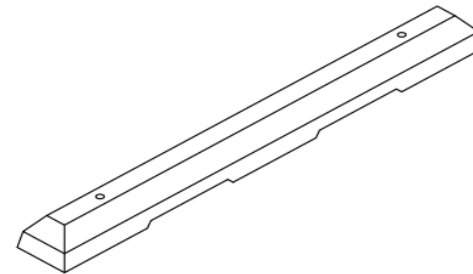
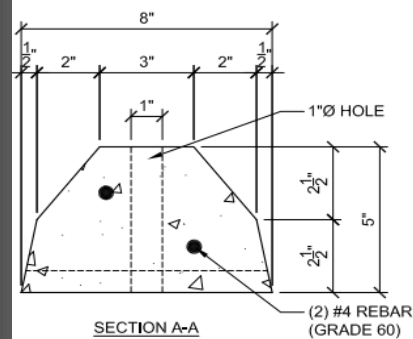
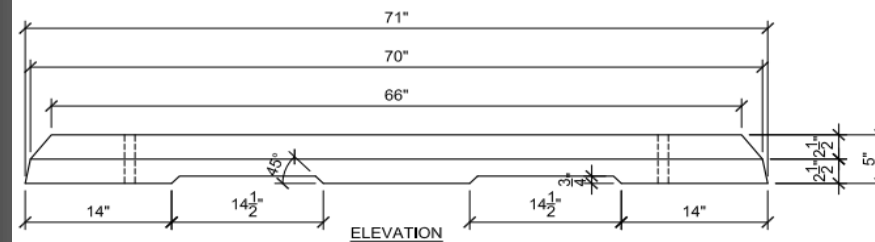
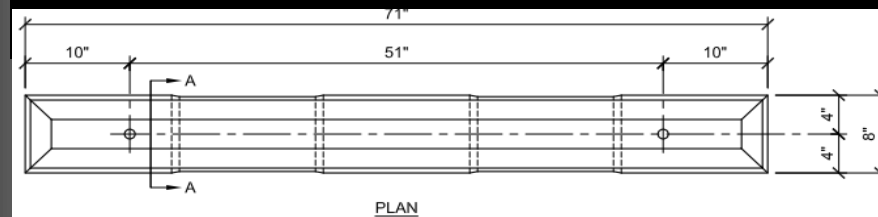
Our budget friendly
car parking CURBO!



Call/text 443-672-8726 | Lancaster, PA | CurboCurbs.com

#CCSCF

D.O.T. Certified parking curb
for government projects

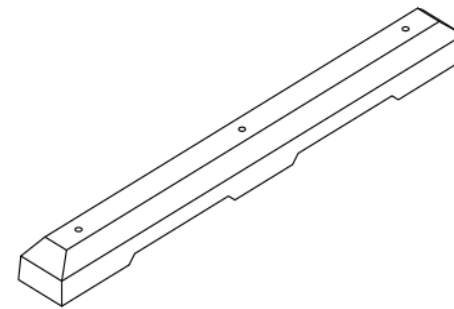
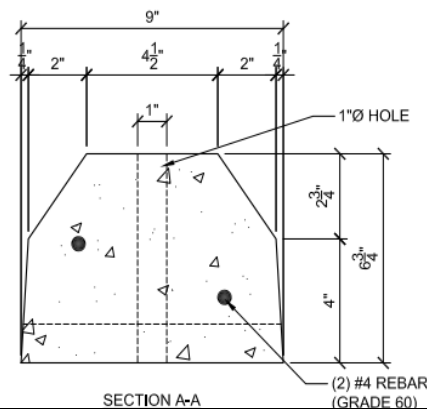
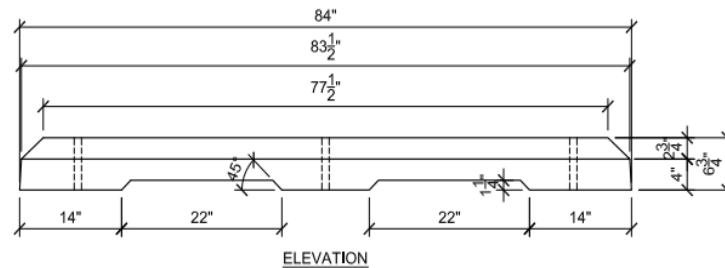
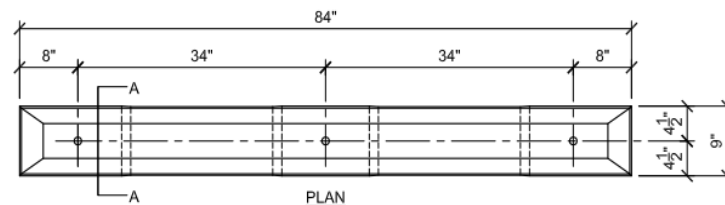


5500 PSI Air Entrained Concrete 185 lbs Car Curb Standard (Slotted) W/ #4 Rebar

Call/text 443-672-8726 | Lancaster, PA | CurboCurbs.com

#CS7S

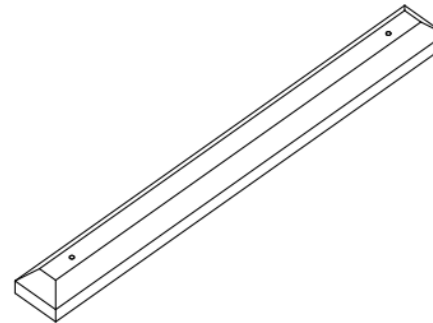
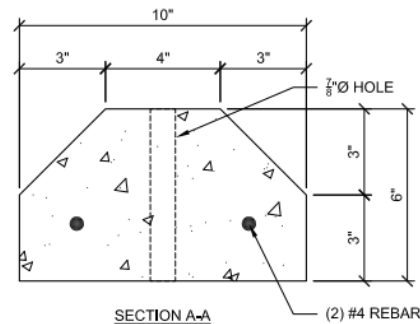
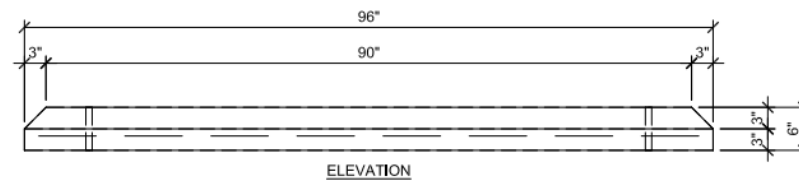
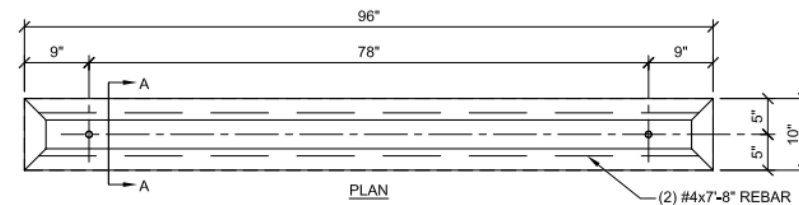
Our Van parking CURBO!



Call/text 443-672-8726 | Lancaster, PA | CurboCurbs.com

#NAZTEC

Basic truck Curbo



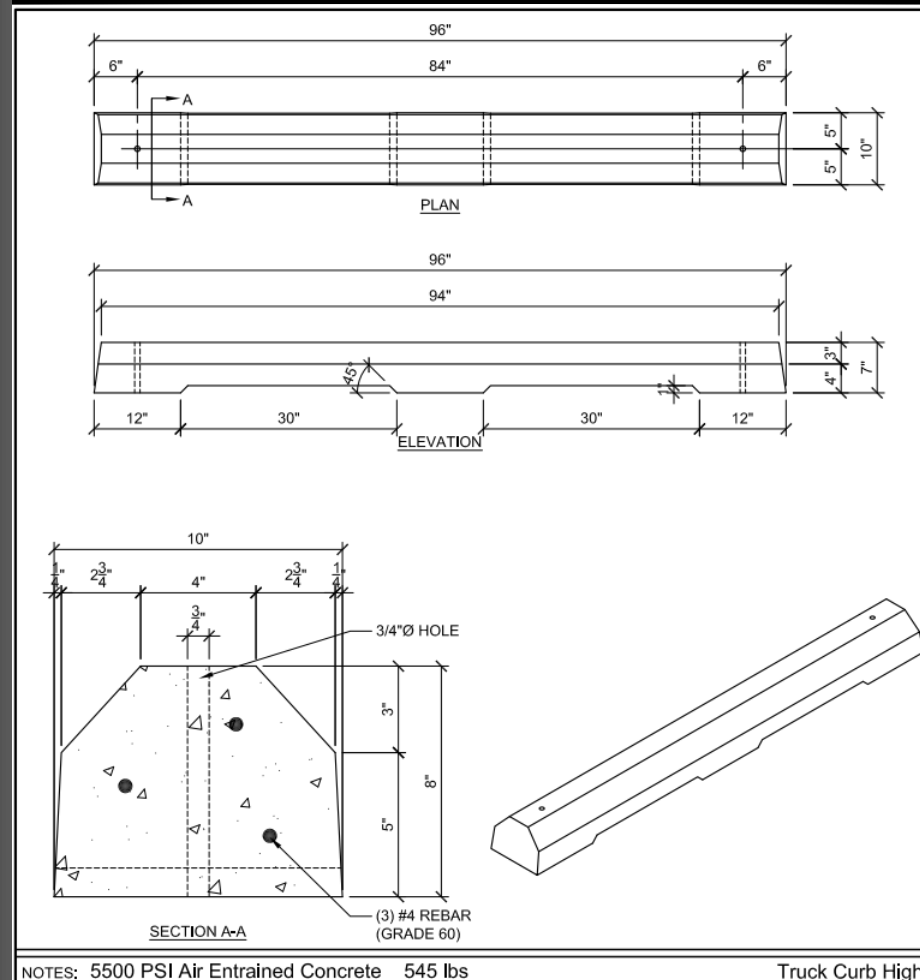
NOTES: 5500 PSI Air Entrained Concrete 400 lbs

New Aztec

Call/text 443-672-8726 | Lancaster, PA | CurboCurbs.com

#TCH1

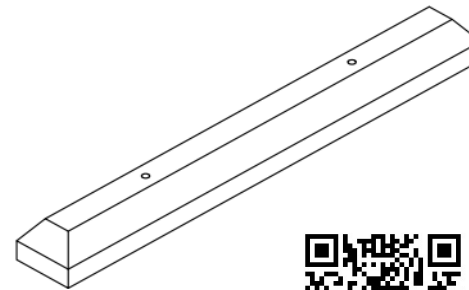
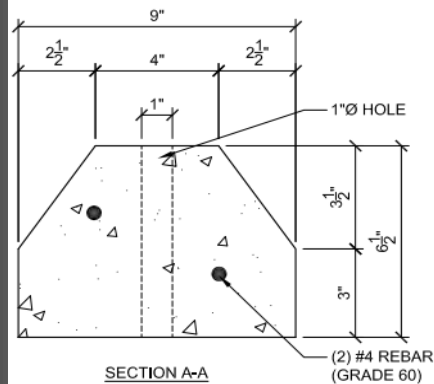
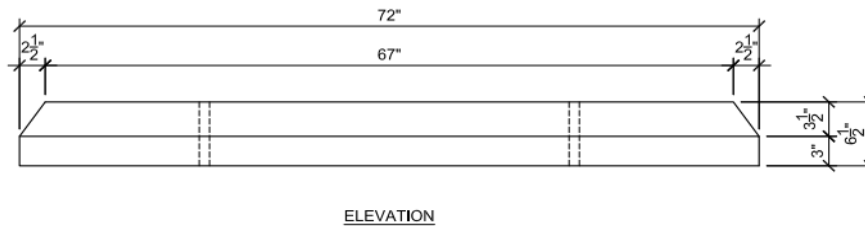
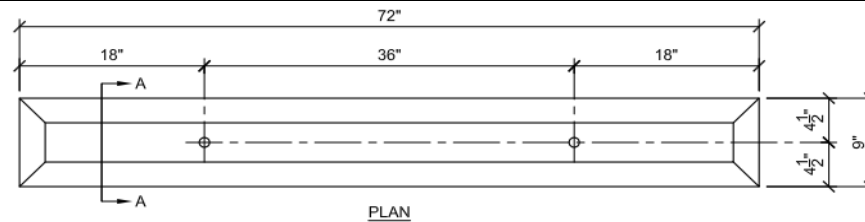
Basic High Truck Curbo



Call/text 443-672-8726 | Lancaster, PA | CurboCurbs.com

#AZCAR

Amazon's spec for car and employees parking



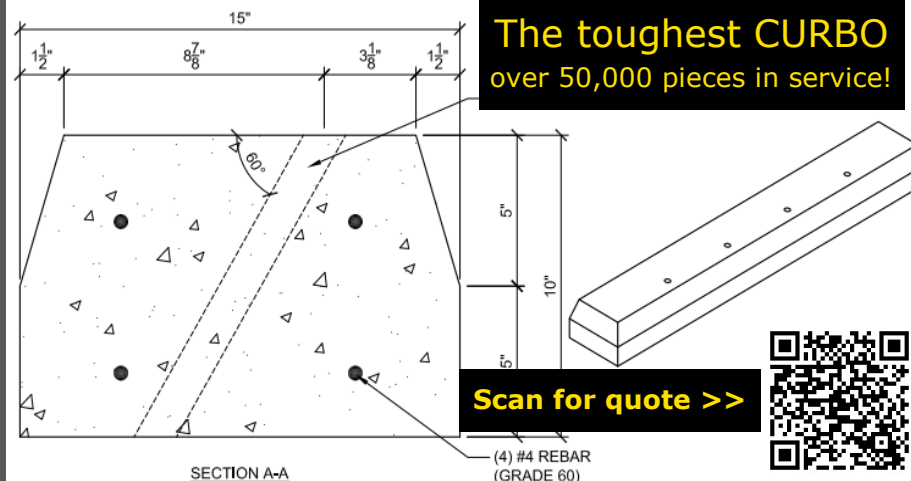
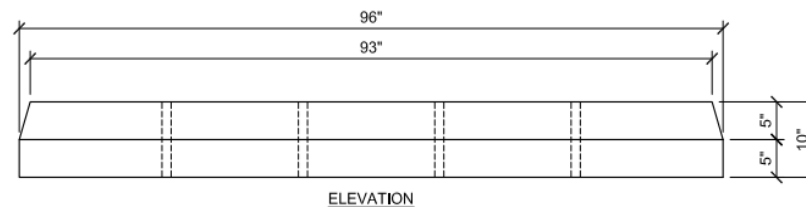
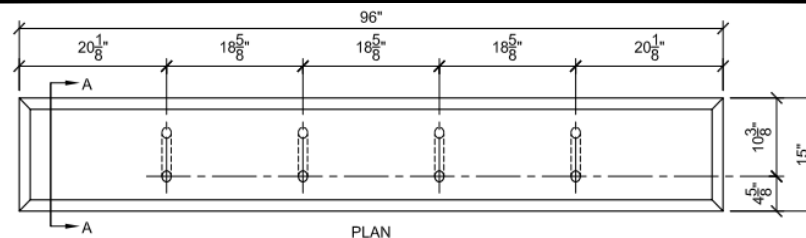
es: 5500 PSI Air Entrained Concrete 306 lb

[Scan for quote >>](#)

Call/text 443-672-8726 | Lancaster, PA | CurboCurbs.com

#AZTEC

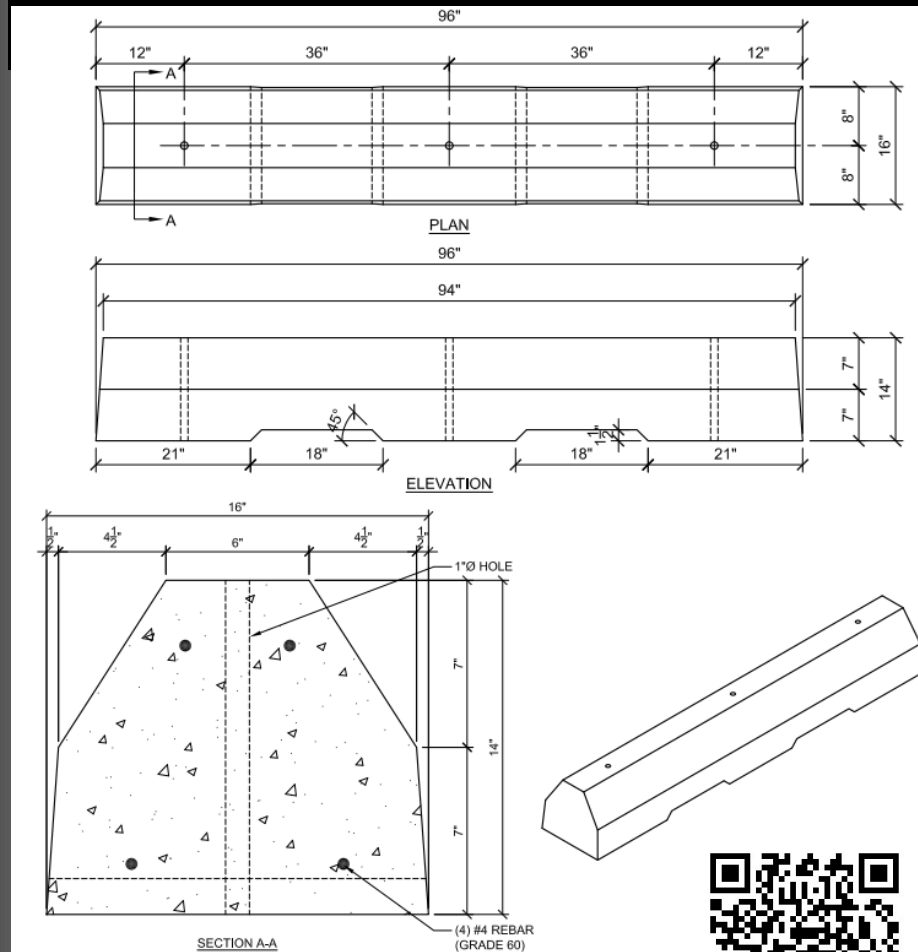
The Warehouse Curbo Fedex, Lidl & Amazon spec



Call/text 443-672-8726 | Lancaster, PA | CurboCurbs.com

#TMEGA

Not recommended for trailer parking applications (Not a stock item)



NOTES: 5500 PSI Air Entrained Concrete 1,600 lbs

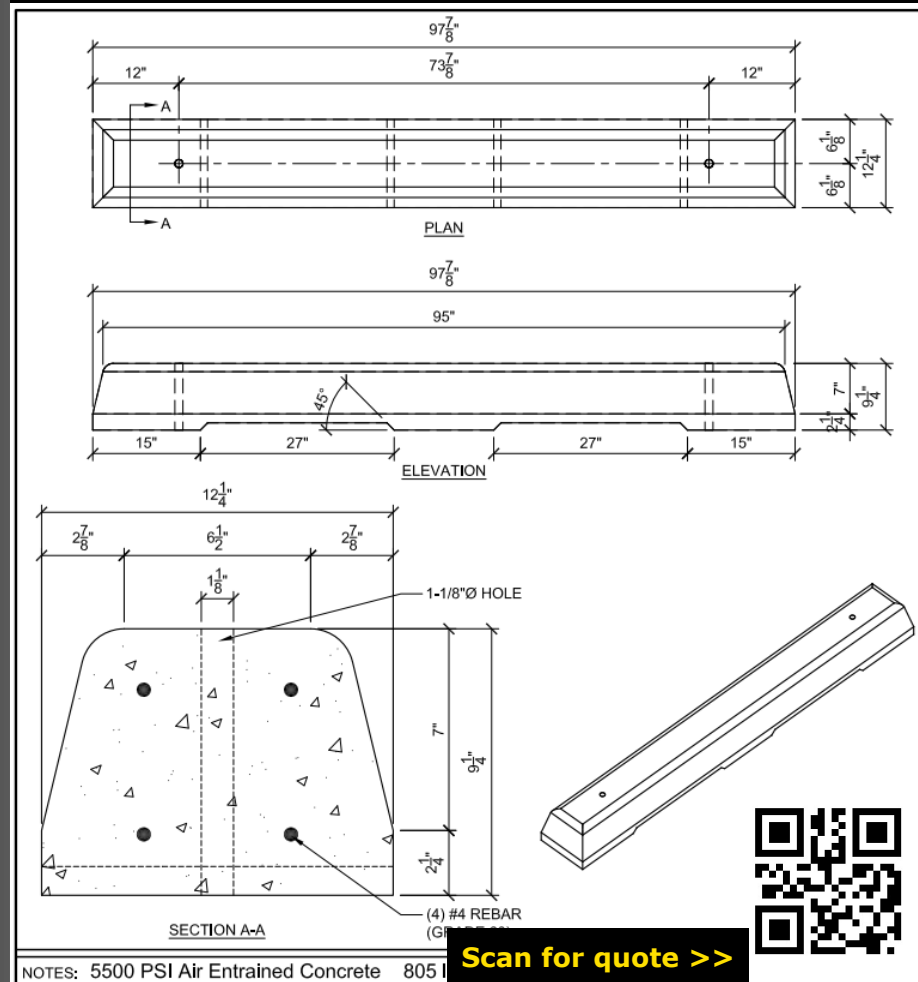
[Scan for quote >>](#)



Call/text 443-672-8726 | Lancaster, PA | CurboCurbs.com

#TCM1

Most popular Truck Curbo!

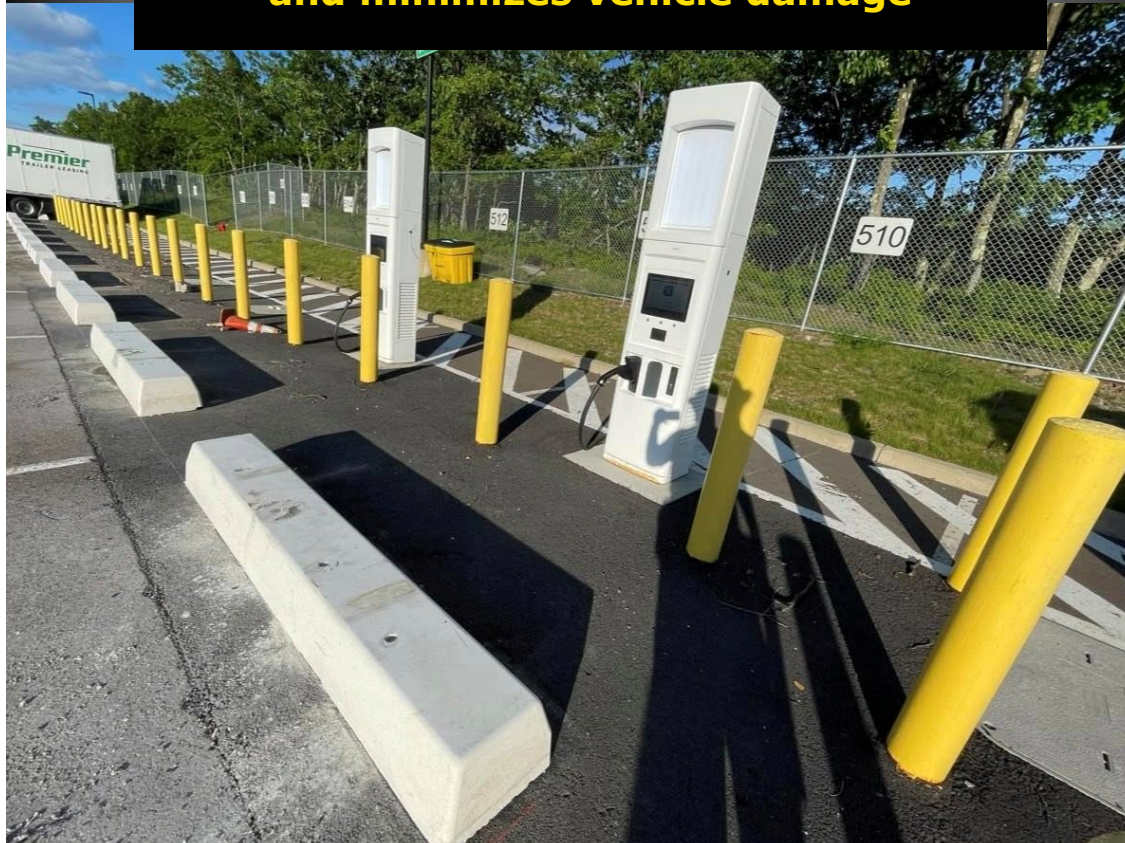


Call/text 443-672-8726 | Lancaster, PA | CurboCurbs.com

EV CURBO's

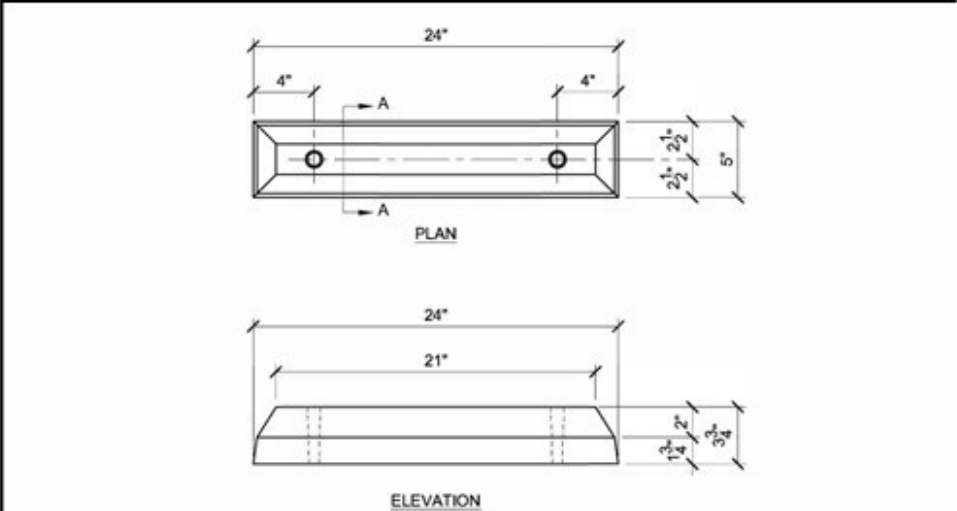
Specifically designed for smaller Electric Vehicles
Lightweight design make these models a popular
choice for DIY and budget friendly projects

**Bollards + Curbos = foolproof protection
and minimizes vehicle damage**

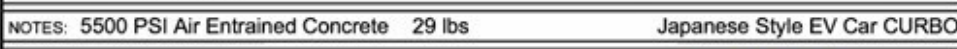
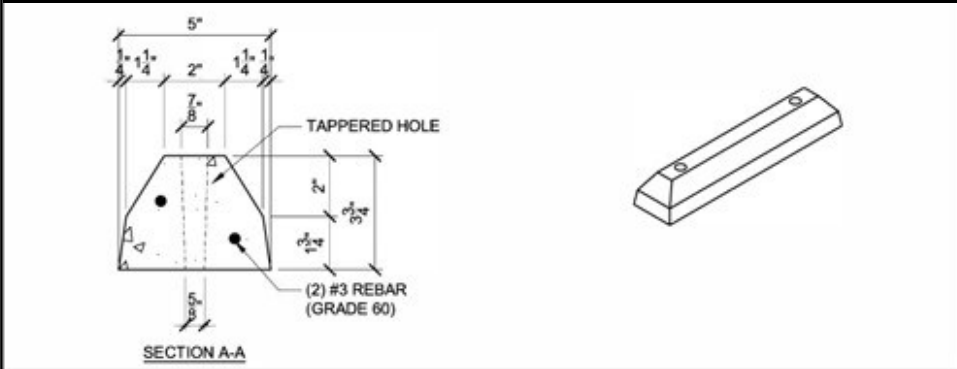


Call/text 443-672-8726 | Lancaster, PA | CurboCurbs.com

#EV2

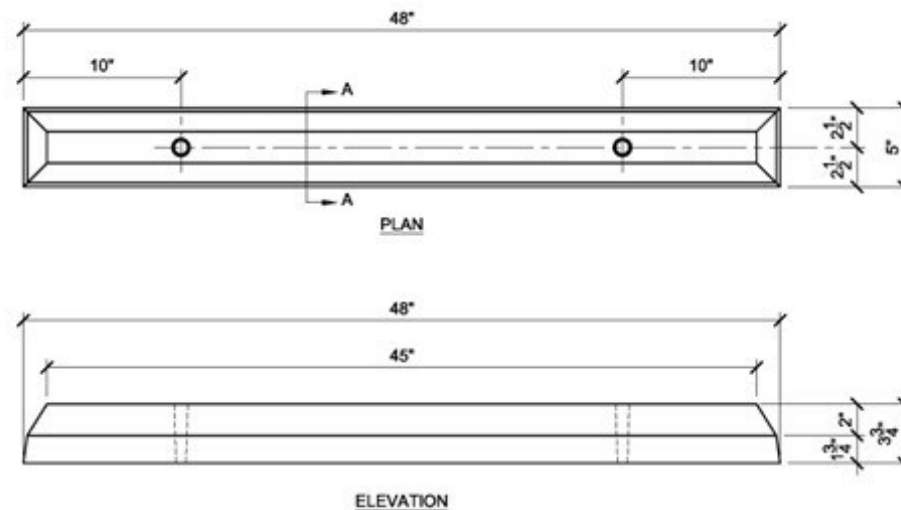


Our most popular residential Curbo

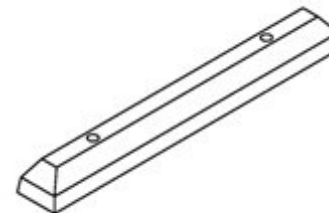
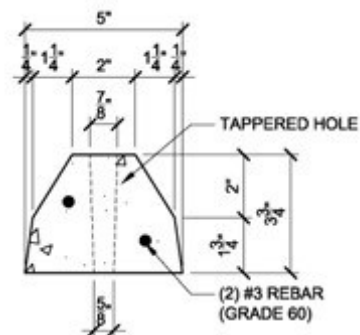


Call/text 443-672-8726 | Lancaster, PA | CurboCurbs.com

#EV4

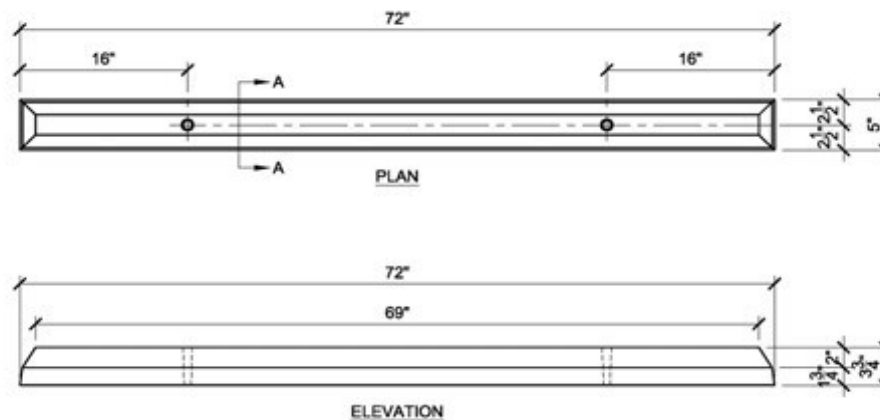


The California Curbo

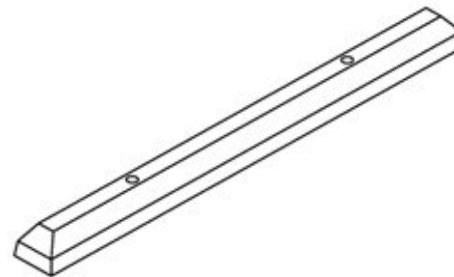
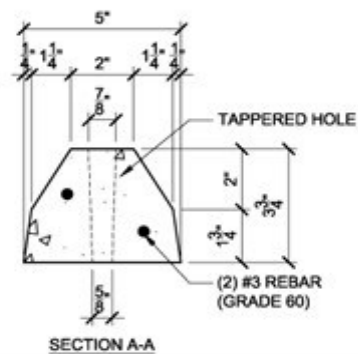


Call/text 443-672-8726 | Lancaster, PA | CurboCurbs.com

#EV6



Same size as most plastic & rubber curbs



NOTES: 5500 PSI Air Entrained Concrete 88 lbs

Florida Style EV Car CURBO

Call/text 443-672-8726 | Lancaster, PA | CurboCurbs.com

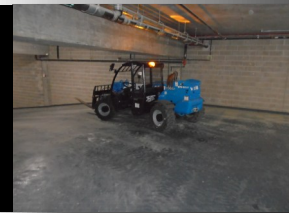
CURBO Installation

Curbo now offers parking curb installation
Nationwide USA and Canada

Our customized rigs and trained crews ensure a
highly successful project. **On time and under budget!**



**Parking garage at
99 Hudson, the
tallest apartment
building in New
Jersey**



Call/text 443-672-8726 | Lancaster, PA | CurboCurbs.com



**2024 install at an active Amazon, CURBO
Installation specializes in warehouse projects!**



**Nighttime install as requested by
the contractor in a shopping center**



Goodyear Tire Factory



Tesla charger protector

CURBO

Concrete Solutions For Better Parking



Curbo Concrete Solutions

21616 York Rd

Freeland MD 21053

Call or Text

443-MR-CURBO

Phone: 443-672-8726

Email: sales@curbocurbs.com

www.CurboCurbs.com